

1:1

MKEXCC0022

[www.vieropaints.it](http://www.vieropaints.it)

Viero

GHIBLI



# Ghibli

Quartz paint with sand effect

Description

Paint with high hiding power. Slightly grain texture that exalts the aesthetic effects of the glaze to be applied

Method of application

**ON UNPAINTED INTERIOR WALL SURFACES**  
(Prefabricated panels, new gypsum or Gypsum panels, etc.)

1. Remove by brush all traces of dust, dirt and any loose plaster material. Level imperfections (holes, cracks, etc.) with a levelling filler, in paste or powder (like STUCCO EXTRA or STUCCO PV) in one or more coats.
2. Over the repaired areas apply Prymer ACQ then after 2÷6 hrs sand-paper and clean carefully.
3. Apply one coat of GHIBLI.

**INTERNAL WALLS PAINTED WITH DISTEMPER PAINT.**

1. Carefully remove all dust and dirt from the surface and even out any imperfections using a levelling filler in paste or powder (such as STUCCO EXTRA or STUCCO PV); sand-paper and clean.
2. Proceeding as described here above.
3. Apply one coat of GHIBLI.

**INTERNAL WALLS PAINTED WITH WASHABLE WATER-BASED PAINT**

1. Clean the surface carefully, level any imperfections, sand-paper and remove dust.
2. Over the repaired areas apply Prymer ACQ then after 2÷6 hrs sand-paper and clean carefully.
3. Apply one coat of GHIBLI.

Optional

Sunlite (available in 4 ready colours: Blue, Gold, Green and Red)

- After application of GHIBLI wait for at list 24 hours, then apply one or two coats of iridescent transparent paint SUNLITE.

It is recommended to finish the entire wall in order to avoid aesthetic differences.

Consumption rate

8 - 10 m2/kg

Interiors / Exteriors

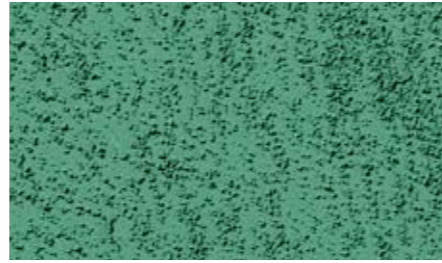
Interiors

Warning

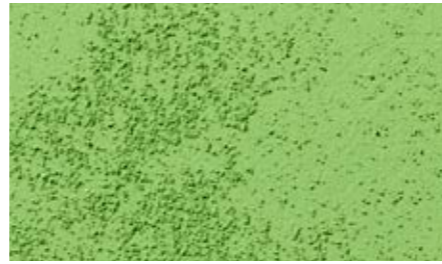
The colours shown are indicative only



GH01



GH02



GH03



GH04



GH05



GH06



GH07



GH08



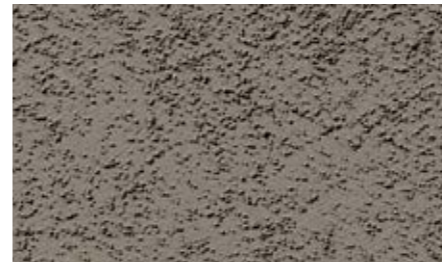
GH09



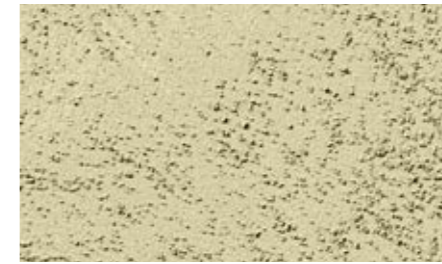
GH10



GH11



GH12



GH13



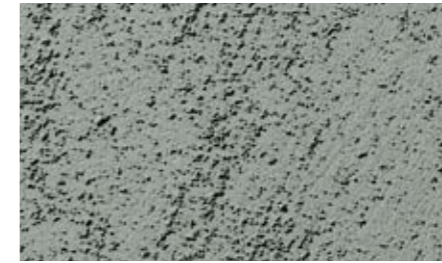
GH14



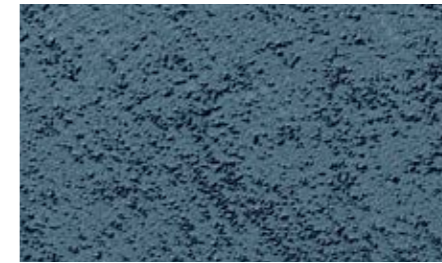
GH15



GH16



GH17



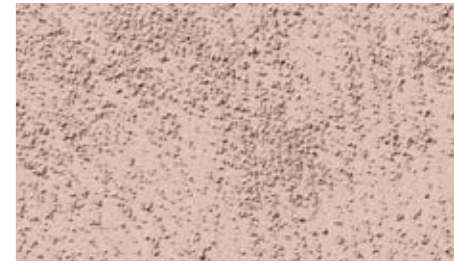
GH18



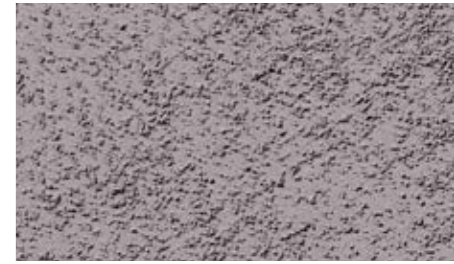
GH19



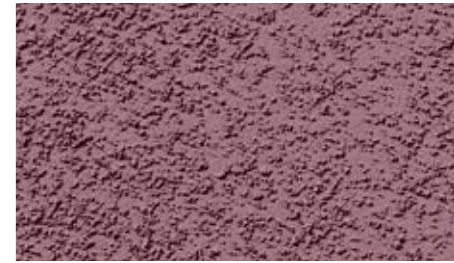
GH20



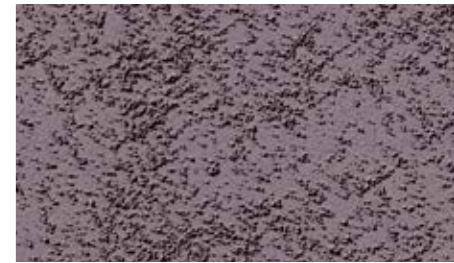
GH21



GH22



GH23



GH24