



# Travertine

Decorative wall coating plaster for interiors and exteriors with travertine effect.

## Description

TRAVERTINE is based on lime putty, natural colouring earths, marble sands and grains, additives that improve the characteristics of the product and its gripping properties, without altering the breathability of the finishing. It can be applied on any interior wall surfaces provided that they are safe and sound with no humidity. TRAVERTINE can also be used for exterior provided that the surface it is mineral, resistant and well protected, without rising dampness and well prepared.

Being a mineral product; TRAVERTINE must be applied on mineral surfaces with fine float finish, composed only of white natural hydraulic lime, with high permeability to water vapor, long setting and hardening time and very low presence of water-soluble salts.

Steel trowel, sponge roller

1. After seasoning of the substrate, wet the surface well with water. Mix the product strongly and apply TRAVERTINE in a uniform layer with a stainless steel trowel
2. If necessary, apply a second coat, according to the roughness of the support.
3. Let it dry at least 24hrs and then apply a coat of TRAVERTINE with a sponge roller, crossing the roller movements and giving the last stroke always from top to bottom.
4. Before that TRAVERTINE is completely dry, press immediately the rough surface with a stainless steel trowel, from top to bottom and/or vice-versa, compacting the product.

## Practical Advices

Slight hues and shadows in the colour (lighter and darker patches) are aesthetic characteristics since the product contains natural marble powders of various tones. Due to the natural composition of this product, the final colour will depend on the weather conditions and absorption of the plaster.

## Consumption rate

2,0-2,2 Kg/m<sup>2</sup>

## Interiors / Exteriors

Interiors/Exteriors

## Warning

The colours shown are indicative only



MUSHROOM



BLUSH GRAY



CONCRETE



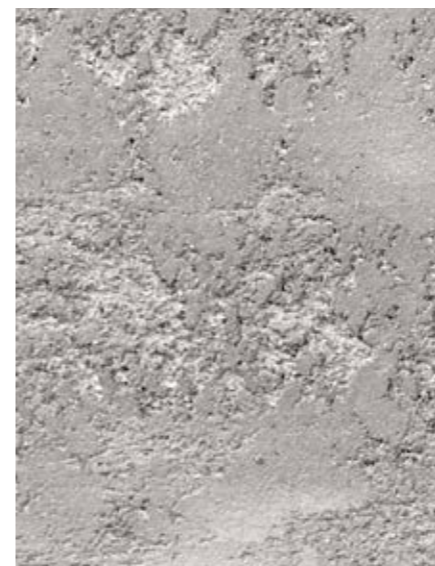
SOAP



PEARL



SAND



POWDER



SANDAL WOOD



POMICE