

1:1

IMKEXCC0021

www.vieropaints.it

Viero

MITHOS LUX



Mithos lux

Lime based finishing plaster, self polishing

Description

MITHOS LUX is a thin-layer finishing and levelling paste based on lime putty, natural earth pigments, micronized marble, adhesion improvers and special additives. After application the product reacts with carbon dioxide of the air generating microcrystalline calcium carbonate. The micro-porous structure ensure a good water vapour permeability. The controlled dosing of the components permits the application in several coats over the withered product without flaking or cracking. It is ideal to attain highly refined marble like glossy finishes. It is easy to apply on different nature of substrates provided that they are smooth, plane and properly prepared.

Method of application

The product is ready to use. Mix up gently until the product is workable. Spread MITHOS LUX with a steel trowel in several coats on the withered product. Polish the final coat only. In case the substrate is not homogeneous. It could be necessary to wait 24 hours before applying and polishing the final coat.

Consumption rate

0.5 - 0.8 kg/m² according to the substrate

Interiors / Exteriors

Interiors

Warning

The colours shown are indicative only



ML01



ML07



ML13



ML19



ML02



ML08



ML14



ML20



ML03



ML09



ML15



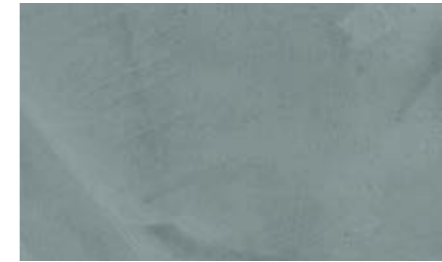
ML21



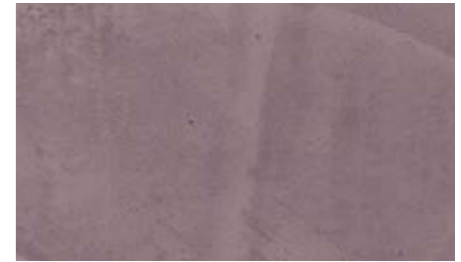
ML04



ML10



ML16



ML22



ML05



ML11



ML17



ML23



ML06



ML12



ML18



ML24