

1:1

IMEXCC0027

www.vieropaints.it

Viero

MARMORIN SAND



Marmorin sand

Lime based finishing plaster, spotted marble effect

Description

VISOLCALCE MARMORIN SAND, lime based polished plaster with spotted marble effect, is a finishing paste suitable to realize translucent finishes with a base of lime putty, natural pigments, micronized marble, additives and adhesion promoters.

After the application, the product reacts with the carbon dioxide of the air originating carbonate of microcrystalline calcium, thus forming a compact, homogenous and transpiring structure.

Fascinating finishes specifically indicated for historical buildings and walls enriched from cornices, friezes, and pilaster strips. Suitable for applications on homogeneous, absorbent and seasoned lime-based plaster finishing coat or cement lime mortar.

Due its natural composition, the final colour will appear shaded with Chiaroscuro in function to the absorption of plaster, the climate and the method of application.

Method of application

Ready to use; mix gently until a homogeneous paste is reached.

Wet the surface then apply one coat of VISOLCALCE MARMORIN SAND by stainless steel trowel. Allow to cure for 24 hours then apply a second coat of product and finish with a sponge trowel like a standard plaster. If a smooth and translucent finish is required, re-pass the second coat with a stainless steel trowel by pressing and smoothing the product.

It is possible to give a water repellent protection to the surface by applying a coat of SAPONIL immediately after the VISOLCALCE MARMORIN SAND. You can also apply ISALCONE S at least 8 days after and on the perfectly dry surface. Wash working tools immediately after use.

Consumption rate

2 – 2.5 kg/m² (in two coats)

Interiors / Exteriors

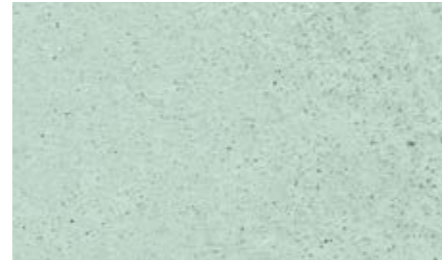
Interiors and Exteriors

Warning

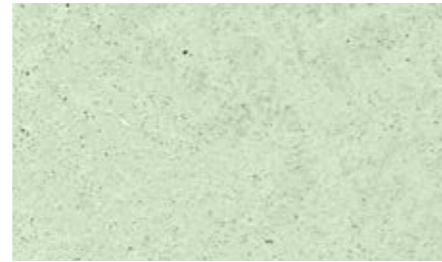
The colours shown are indicative only



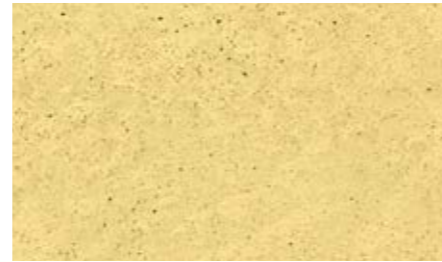
MS01



MS02



MS03



MS04



MS05



MS06



MS07



MS08



MS09



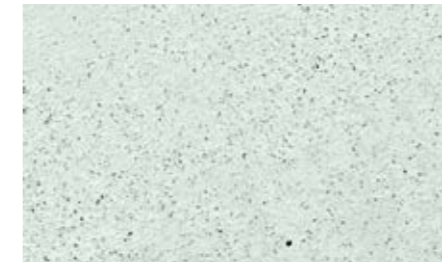
MS10



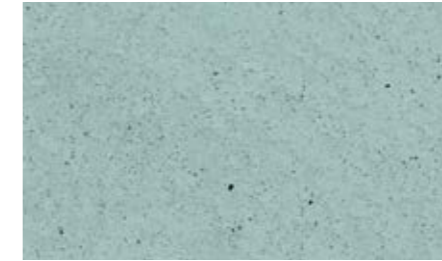
MS11



MS12



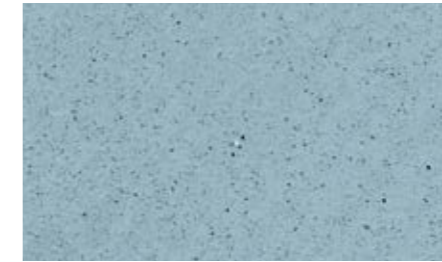
MS13



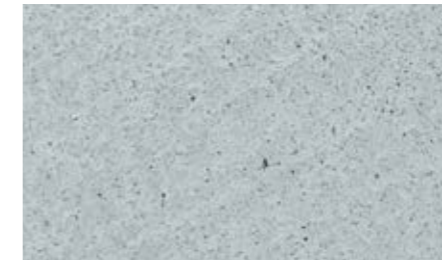
MS14



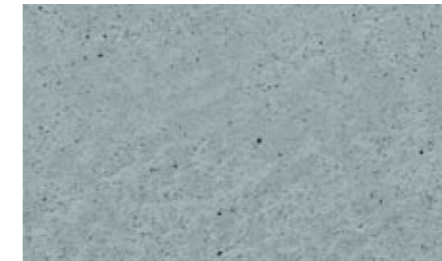
MS15



MS16



MS17



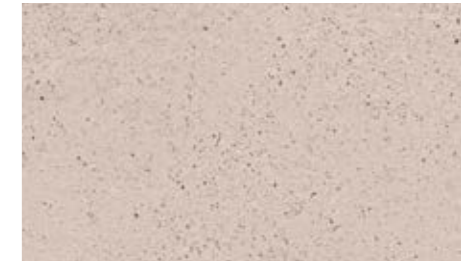
MS18



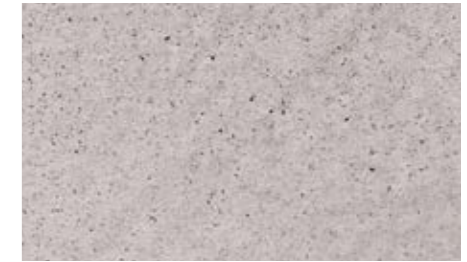
MS19



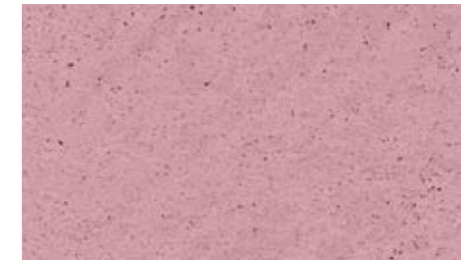
MS20



MS21



MS22



MS23



MS24