

1:1

MKEXCC0025

www.vieropaints.it

Viero

MARMORIN EXTRA



Marmorin extra

Lime based finishing plaster, traditional marmorino effect

Description

VISOLCALCE MARMORIN EXTRA, Venetian polished plaster (Venetian Marmorin) is a finishing paste ideal to achieve translucent finishes like “calce rasata”. It is based on lime putty, earth pigments, micronized marble, additives and adhesion promoters. After application it reacts with carbon dioxide in the atmosphere generating microcrystalline calcium carbonate and forming a compact, homogenous and transpiring finish. It gives the wall fascinating effects, specifically indicated for historical buildings and walls particularly where cornices or other decorative friezes are on the façade. Suitable for application on homogeneous, absorbent and seasoned lime based plasters or lime cement based mortars. Due to the natural composition of the product the final colour will result with a shaded effect according to the absorption of the substrate, the climatic conditions and the method of application.

Method of application

The product is ready to use: mix gently until an homogeneous paste is reached. Wet the surface then apply one coat of VISOLCALCE MARMORIN EXTRA by stainless steel trowel. Allow to cure for 24 hours then apply a second coat of product and finish with sponge trowel like a standard plaster. If a smooth and translucent finish is required, repass the second coat with a stainless steel trowel by pressing and smoothing the product. It is possible to give a water repellent protection to the surface by applying a coat of SAPONIL immediately after the VISOLCALCE MARMORIN EXTRA. You can also apply ISALCONE S at least 8 days after and on the perfectly dry surface. Wash working tools immediately after use.

Consumption rate

3 - 4 kg/m² (in two coats)

Interiors / Exteriors

Interiors and Exteriors

Warning

The colours shown are indicative only



ME01



ME02



ME03



ME04



ME05



ME06



ME07



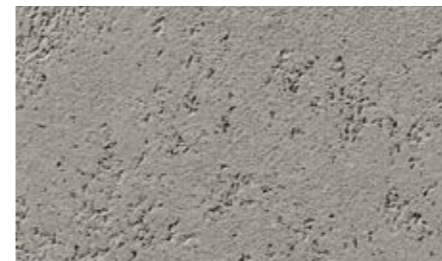
ME08



ME09



ME11



ME10



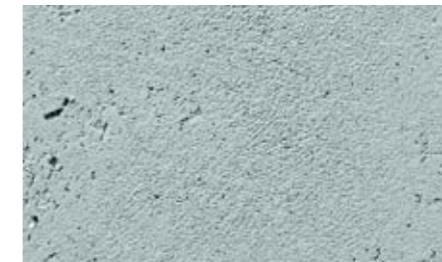
ME12



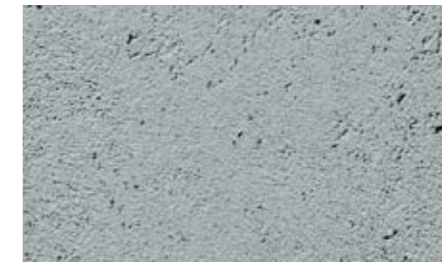
ME13



ME14



ME15



ME16



ME17



ME18



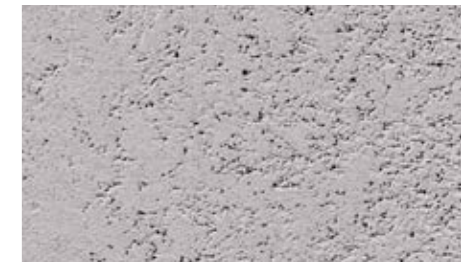
ME19



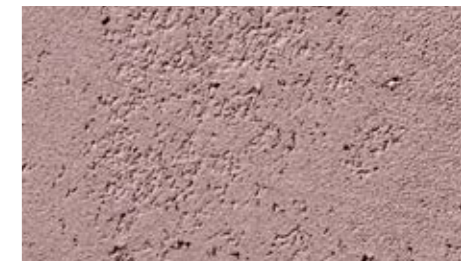
ME20



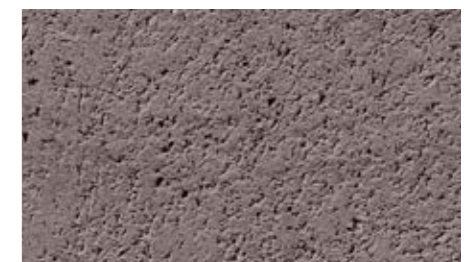
ME21



ME22



ME23



ME24