

1:1

MKEXC0019

[www.vieropaints.it](http://www.vieropaints.it)

Viero

LITHOS MATT



# Lithos matt

Finishing plaster, satin marble effect

## Description

LITHOS MATT is a decorative coating with an extremely smooth marble and satin effect.

It is a beautiful and highly refined decorative finish for hotels, offices, shops, exhibition halls, living rooms, etc. Ideal for all types of interior surfaces such as cement renders, Gypsum plasters, prefabricated panels, wood and its by-products, as long as sufficiently smooth.

With the range of colours and the applicator's capacity and inspiration, it is possible to attain a variety of designs and chromatic effects.

## Method of application

1. Apply the first coat of LITHOS MATT in the chosen colour with a stainless steel trowel, carefully smoothing the entire surface and allow to dry for about 5 to 8 hours. In case of surfaces which are not plane and smooth, before proceeding with the next steps, it is advisable to give a second levelling coat as above.
2. When completely dry, sandpaper the surface lightly with a very fine grade sandpaper to remove all imperfections.
3. Proceed with the application of the decoration using a small stainless steel flexible spatula. Apply LITHOS MATT in semi-circular movements to form fine coloured coats as wide as the spatula itself, spread evenly over the entire surface, scraping away all excess material at each movement.
4. Continue the application of the LITHOS MATT in this way for several coats, each time filling the spaces in between the coloured areas attained from the previous coat, thus forming the marble effect, typical of this product. A harder pressure should be given on the spatula with the last passage so as to achieve the gloss effect. The size of the spatula, the number of applications and the eventual combination of colours, will determinate the desired final effect.
5. Once the decoration process has been completed and prior to final drying, pass over the surface with the same clean spatula and/or a cloth to give the final satin effect to the applied product.

## Consumption rate

0.8 - 1.0 kg/m<sup>2</sup> (for a recommended dry film thickness of 1,0 mm)

## Interiors / Exteriors

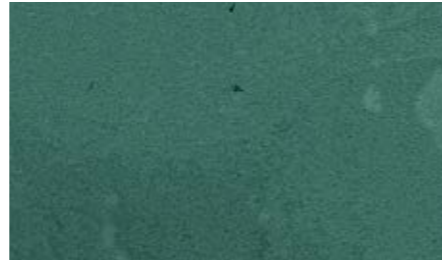
Interiors

## Warning

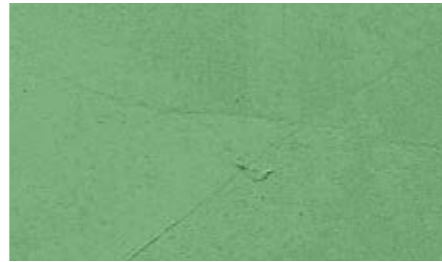
The colours shown are indicative only



LM01



LM02



LM03



LM04



LM05



LM06



LM07



LM08



LM09



LM10



LM11



LM12



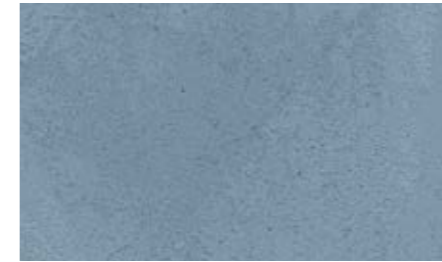
LM13



LM14



LM15



LM16



LM17



LM18



LM19



LM20



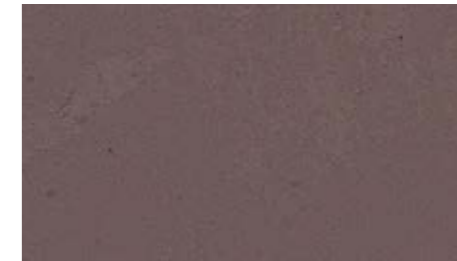
LM21



LM22



LM23



LM24